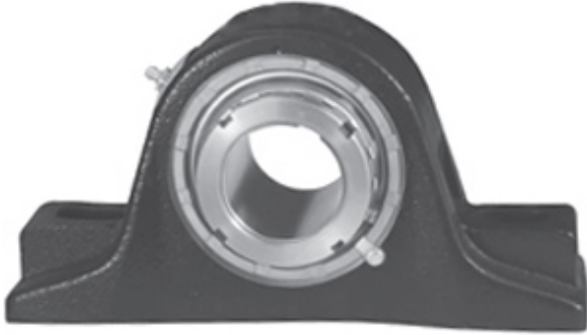




Jinan Kaiming Bearing Co., Ltd.

2 Inch | 50.8 Millimeter x 3.156 Inch | 80.162
Millimeter x 2.75 Inch | 69.85 Millimeter
REXNORD MPS9200 Pillow Block Bearings



MPS9200 Bearing 2D drawings and 3D CAD models

Bearing No. MPS9200

Category	Pillow Block Bearings
Inventory	0.0
Manufacturer Name	REXNORD
Minimum Buy Quantity	N/A
Weight	9.216
EAN	0698210712617
Product Group	M06288
Number of Mounting Holes	2
Mounting Method	Tapered Adapter Sleeve
Housing Style	2 Bolt Pillow Block
Rolling Element	Spherical Roller Bearing
Housing Material	Cast Iron
Expansion / Non-expansion	Expansion
Mounting Bolts	5/8 Inch
Relubricatable	Yes
Insert Part Number	9200U
Seals	Heavy Contact
Housing Configuration	1 Piece Solid
Inch - Metric	Inch
Other Features	Double Row Extra Heavy Duty
Long Description	2 Bolt Pillow Block; 2" Bore; 2-3/4" Base to Center Height; Tapered Adapter Sleeve Mount; Spherical Roller Bearing;



Jinan Kaiming Bearing Co., Ltd.

	Relubricatable; Cast Iron; Heavy Contact; Expansion
Category	Pillow Block
UNSPSC	31171511
Harmonized Tariff Code	8483.20.40.80
Noun	Bearing
Keyword String	Pillow Block
Manufacturer URL	http://www.rexnord.com
Manufacturer Item Number	MPS9200
Manufacturer Internal Number	6871261
Weight / LBS	20.3
B	2.75 Inch 69.85 Millimeter
Bolt Spacing Minimum	0 Inch 0Millimeter
D	3.156 Inch 80.162 Millimeter
Nominal Bolt Center to Center	7.5 Inch 190 Millimeter
Bolt Spacing Maximum	0 Inch 0Millimeter
d	2 Inch 50.8 Millimeter
Actual Bolt Center to Center	7.5 Inch 190Millimeter